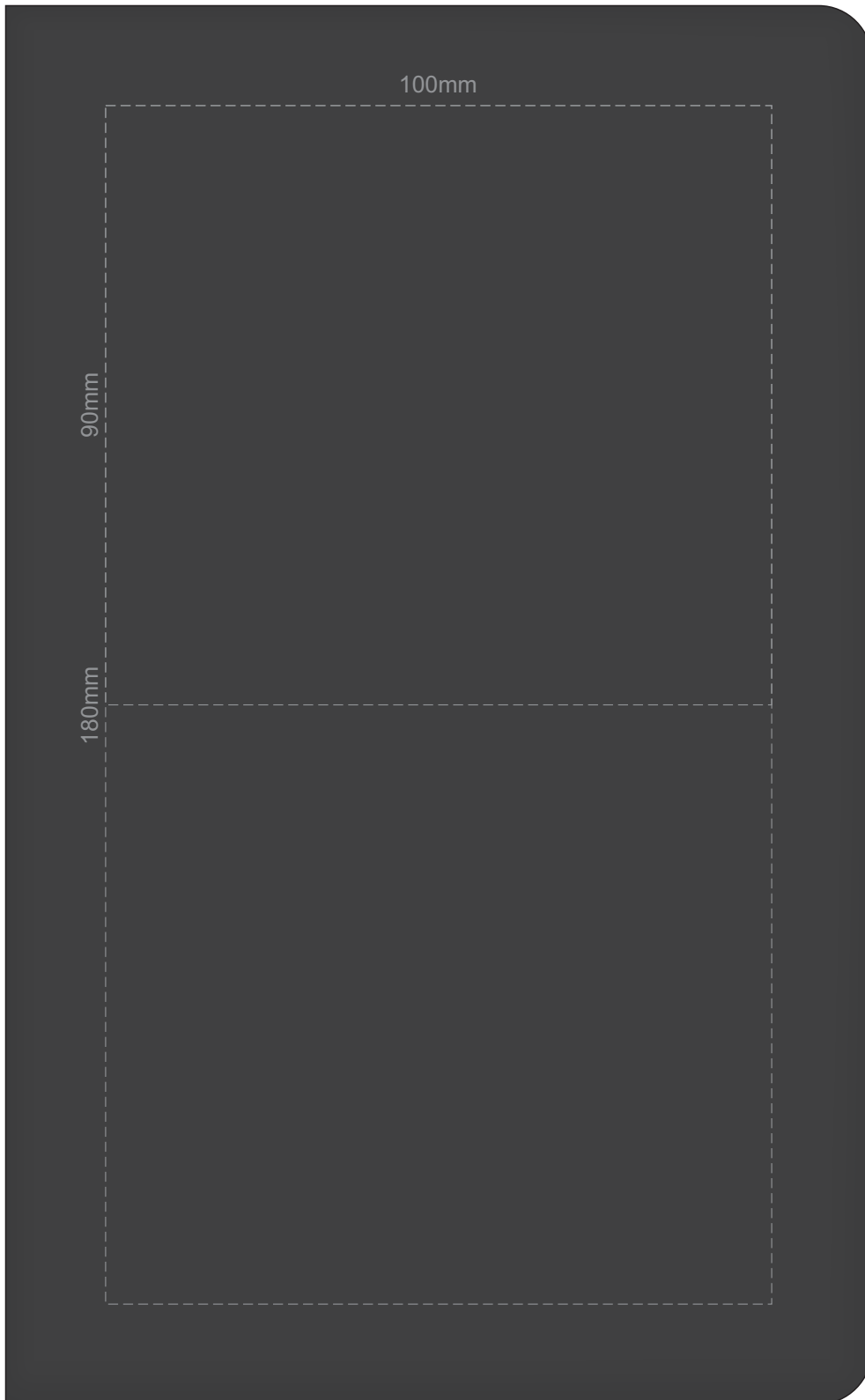




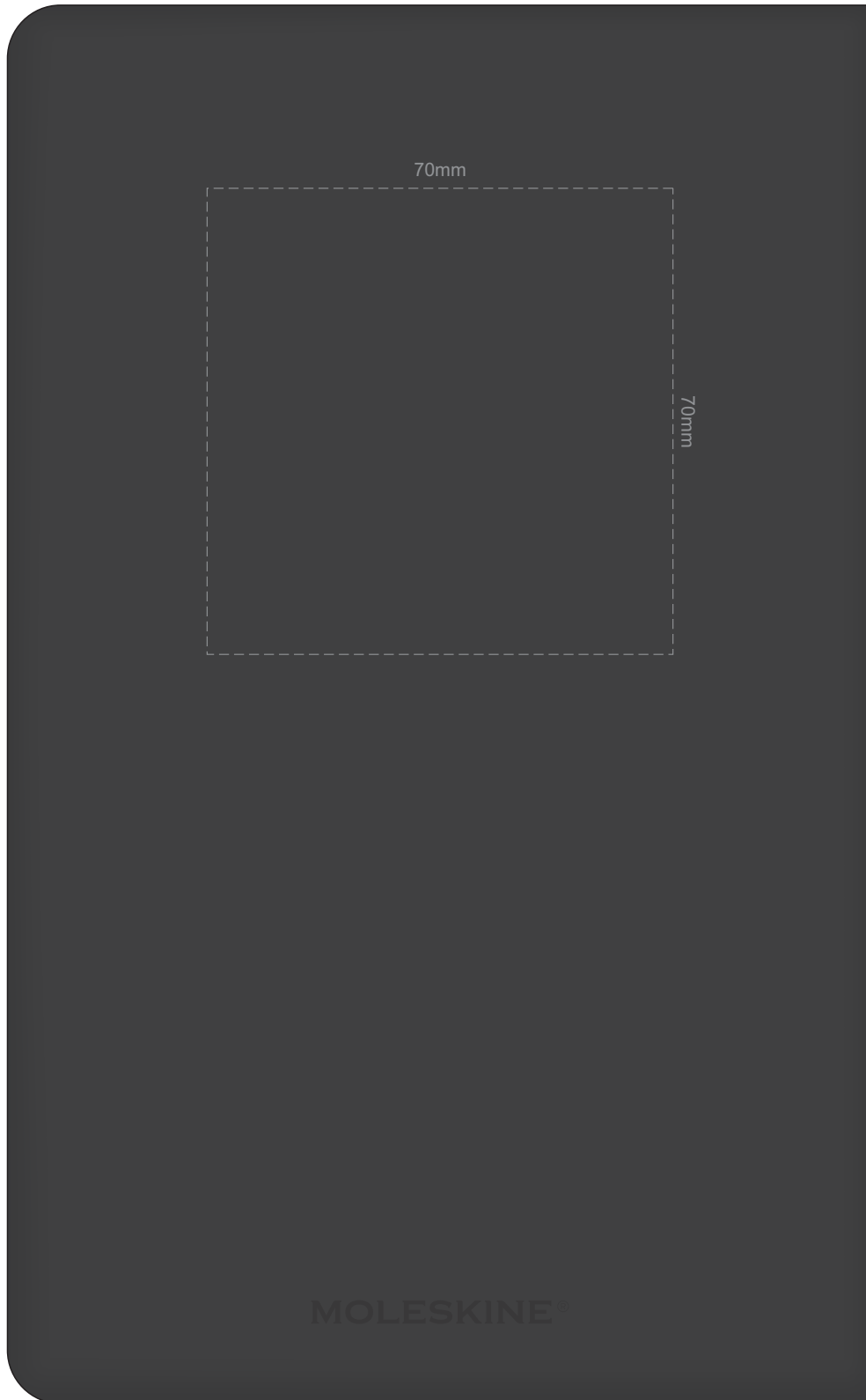
100% of Actual Size
Debossing
Debossing XL



Print area 100 x 90mm is moveable within the XL deboss area and can rotate to suit.



100% of Actual Size
Debossing Back Cover





70% of Actual Size
Pad Print Front End-Paper

The diagram shows a yellow rectangular area representing the front end-paper. A large red dashed rectangle outlines the main area. Inside this, a smaller black dashed rectangle is centered, with dimensions 55mm (width) and 65mm (height). Within this black dashed rectangle, a smaller black dashed rectangle is centered, with dimensions 55mm (width) and 35mm (height). At the bottom center of the yellow area, there is a small logo consisting of the letter 'M' followed by a 3x3 grid of squares.

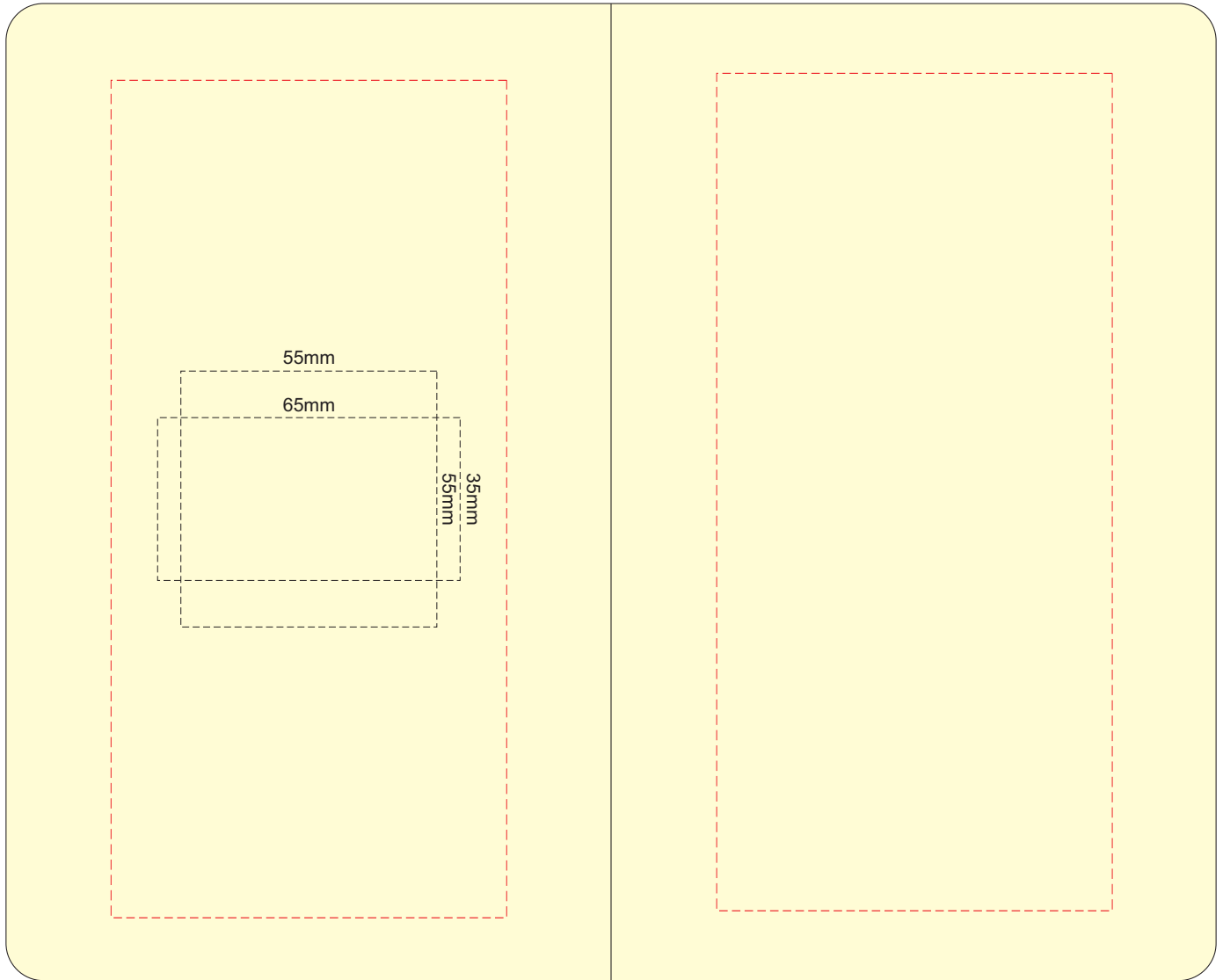
In case of loss, please return to:

As a reward: \$ _____

Branding area can be moved **anywhere within the red lines.**

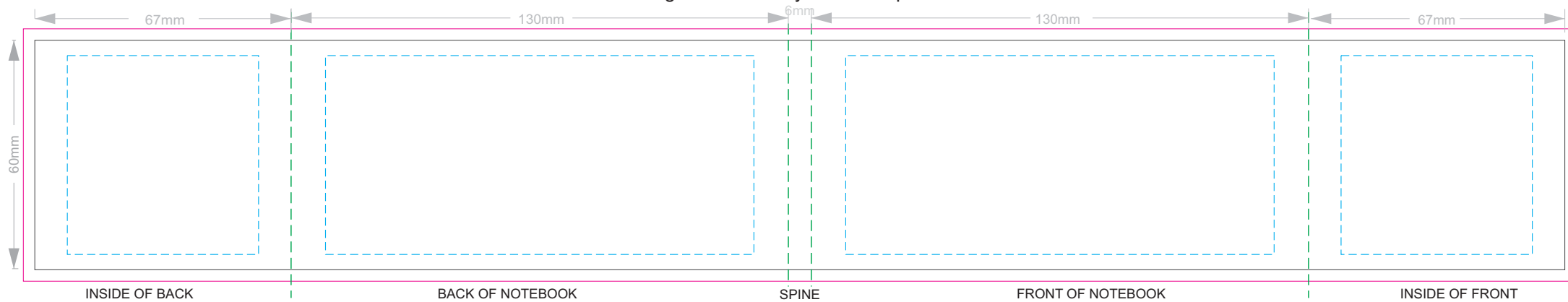


70% of Actual Size
Pad Print Back End-Paper

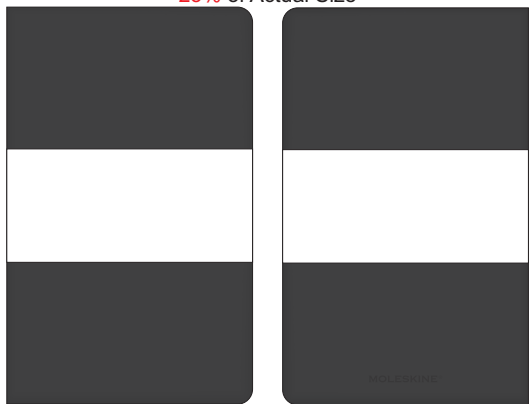


Branding area can be moved anywhere within the red lines.

70% of Actual Size
Digital Print - Belly Band Template



25% of Actual Size



- Green Line = Fold Lines when assembled on notebook
- Blue Line = The SIGNIFICANT PRINT AREA
(Keep all critical images & text within this box)
- Black Line = Maximum print area
- Pink Line = Bleed off to here

FRONT Belly Band Assembled on Notebook BACK