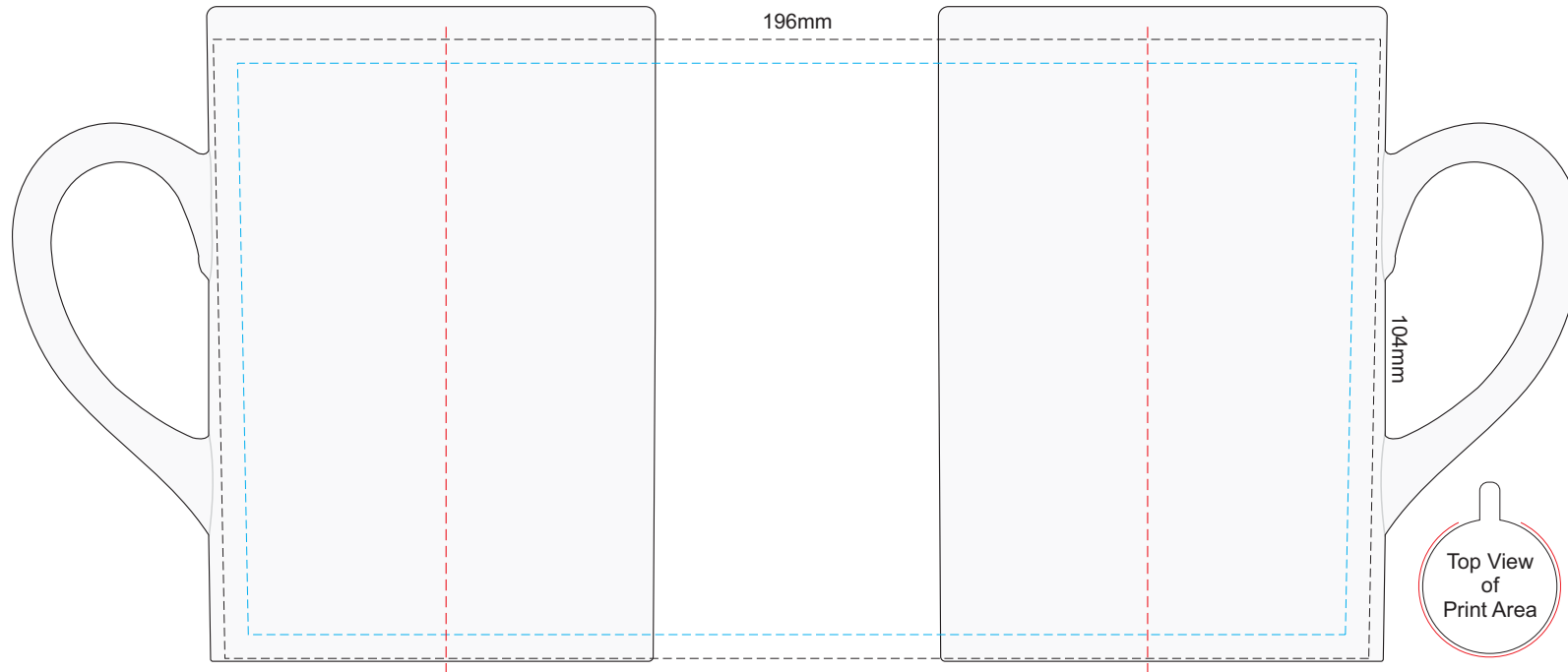


80% of Actual Size  
Sublimation



The Roma mug is slightly conical. Any horizontal lines in art may appear curved, vertical lines may appear on a slight angle.  
Please note there will be a white space between the top of the artwork and the lip of the mug. Bleeding artwork off the top is not possible.

**Blue Line = The SIGNIFICANT PRINT AREA**  
(Keep all critical images & text within this box)  
**Black Line = Maximum print area**  
**Red Line = Exact opposites of the product**  
(centre artwork to the red line)

#### QUALITY OF CERAMICS

Due to the inherent properties of ceramic ware produced by foreign manufacturers, there may be small imperfections or irregularities which should not be perceived as defective. Variations in materials firing temperatures and colour pigment may result in glaze and imprint colour variations. These variations are considered acceptable.